

Daily Derivatives & Market Report

CONTENTS

Page No.	Particulars
2	Market Summary
3	Nifty Futures – Derivatives Snap
4	Bank Nifty Futures – Derivatives Snap
5	Activity in Nifty Options
6	What do Nifty Technical suggest
7	Derivative Analysis
8	Disclaimer

Index Trend Analysis

Pivot(Daily)	Close	S2	S1	Pivot	R1	R2	Daily	Weekly	Monthly
Nifty	10430	10345	10388	10461	10503	10576	Sell	Sell	Sell
Sensex	34345	34073	34209	34439	34575	34804	Sell	Sell	Sell
Nifty Futures	10419	10331	10375	10457	10501	10583	Sell	Sell	Sell
Bank Nifty	25685	25455	25570	25737	25852	26019	Sell	Sell	Sell
CNX IT	13464	13325	13395	13505	13575	13685	Sell	Sell	Sell

Market Summary

Domestic Indices	Close	Points	% Chg
SENSEX	34344.9	-306.3	-0.9
NIFTY	10430.4	-106.4	-1.0
MIDCAP	15699.8	-38.4	-0.2
SMLCAP	16976.9	-80.0	-0.5
BSEFMC	11154.3	-79.3	-0.7
AUTO	24164.8	-130.3	-0.5
POWER	2084.9	-1.8	-0.1
REALTY	2222.2	-28.3	-1.3
BSE IT	13205.3	-26.8	-0.2
BANSEX	28834.9	-89.0	-0.3
OILGAS	13762.4	-491.7	-3.5
METAL	13076.6	-534.3	-3.9

Currency Futures	Close	Pre. Pts	% Chg
29-May-18 EUR-INR	80.23	80.43	-0.25
29-May-18 USD-INR	68.48	68.09	0.58
29-May-18 GBP-INR	91.29	91.61	-0.35
29-May-18 JPY-INR	62.44	61.38	1.73

Advance/ Decline	Adv	Dec	Un Ch.
NSE	697	1112	65
BSE	1068	1587	122

FII/DII Capital Mkt*	Buy	Sell	Net
FII	4503	4814	(311)
DII	4249	3459	790

*NOTE: - FII AND DII data figure is provisional

Market Commentary

Wednesday turned-out to be a disappointing day of trade for Indian equity benchmarks, with frontline gauges ending below their crucial 34,400 (Sensex) and 10,450 (Nifty) levels, on the back of high fuel prices and weakness in rupee. Markets started the session on pessimistic note as sentiments remained downbeat on report that fuel prices hit a fresh record high on Tuesday as petrol prices rose 30 paise to Rs 84.70 per litre in Mumbai. Similarly, diesel prices rose 27 paise to Rs 72.48 per litre in Mumbai. Anxiety spread among investors as former Union Finance Minister P Chidambaram criticised the Centre for the fuel price hike and claimed that the rate can be reduced by Rs 25 per litre but the government is not doing it. Traders paid no heed towards Employment Provident Fund Organisation's (EPFO) latest 'Overall Payroll Data' report showing that India created 39.36 lakh new jobs in seven months period till March 2018. As per the report, total 6,13,134 new payrolls were created during March 2018 as against 5,89,034 created in the previous month, registering a growth of 4.09%.

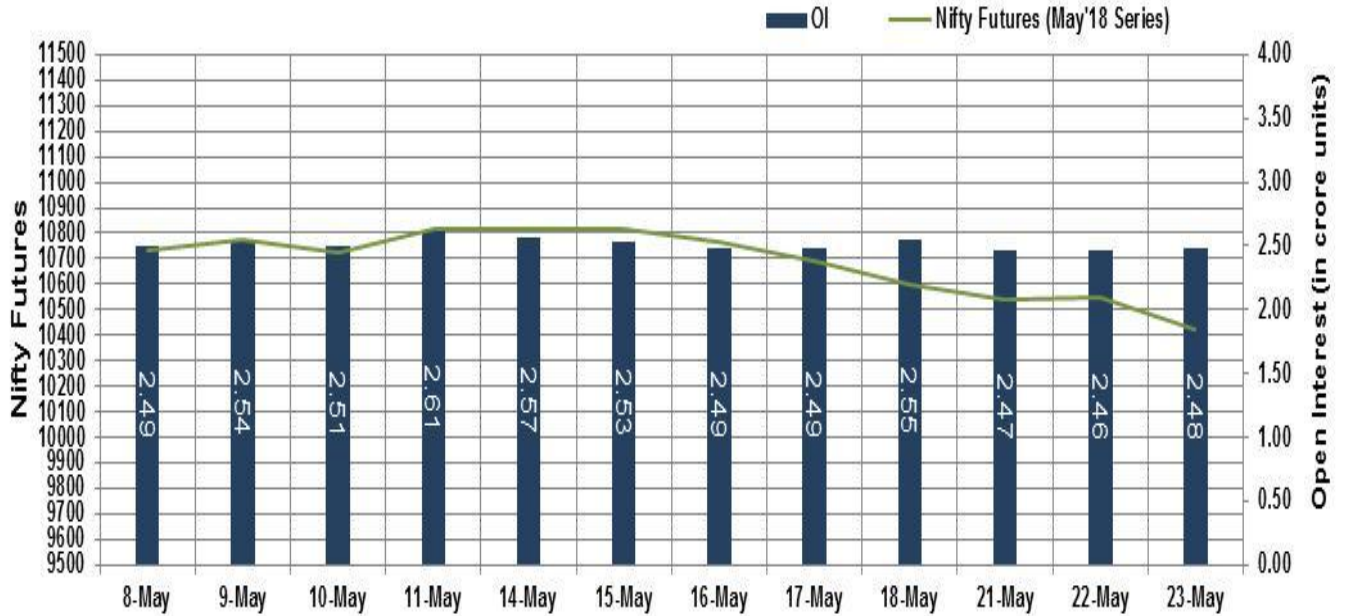
Sentiments also dampened after European markets made a weak start amid Italian government uncertainty and souring market sentiment over ongoing trade talks between the world's two biggest economies. Asian shares ended mostly in red on Wednesday with investors cautious after US President Donald Trump tempered optimism over progress made in trade talks between the world's two largest economic powers.

Market Turnover & FII Derivative Data

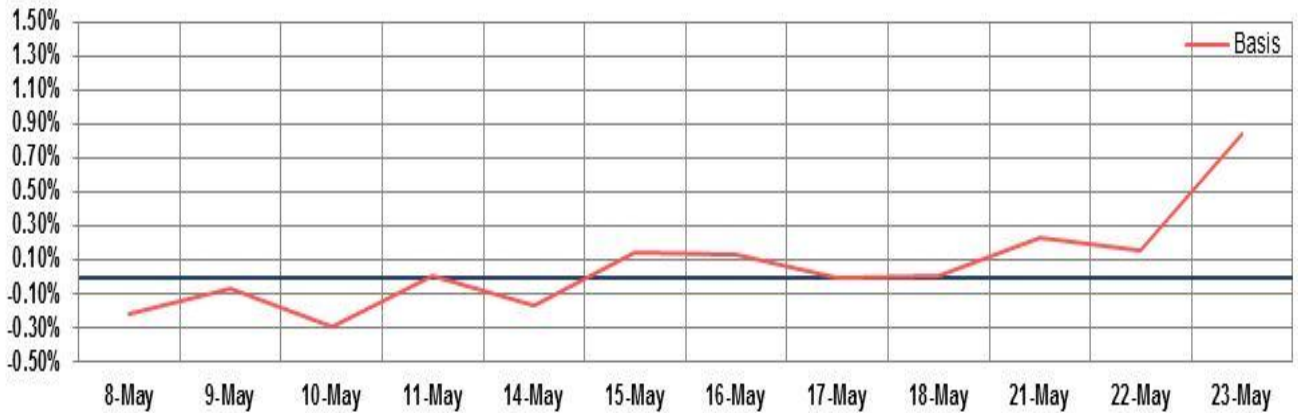
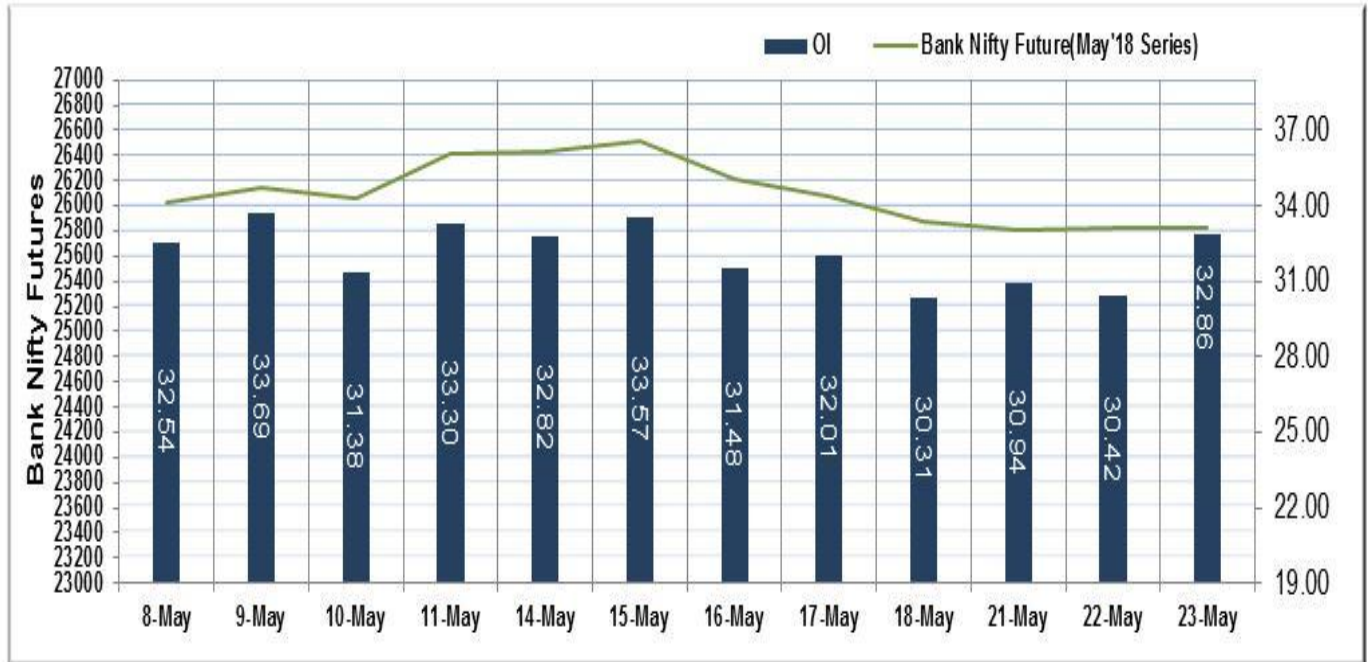
Market TO	Current	Previous	Net%
BSE CASH	3147	2963	6
NSE CASH	30753	30182	2
NSE FO	883832	702866	26

FII Derivatives	Buy	Sell	Net
Ind. Futures	2181	3921	(1740)
Ind. Options	97626	97787	(161)
Stk. Futures	11380	11221	159
Stk. Options	10004	10006	(2)

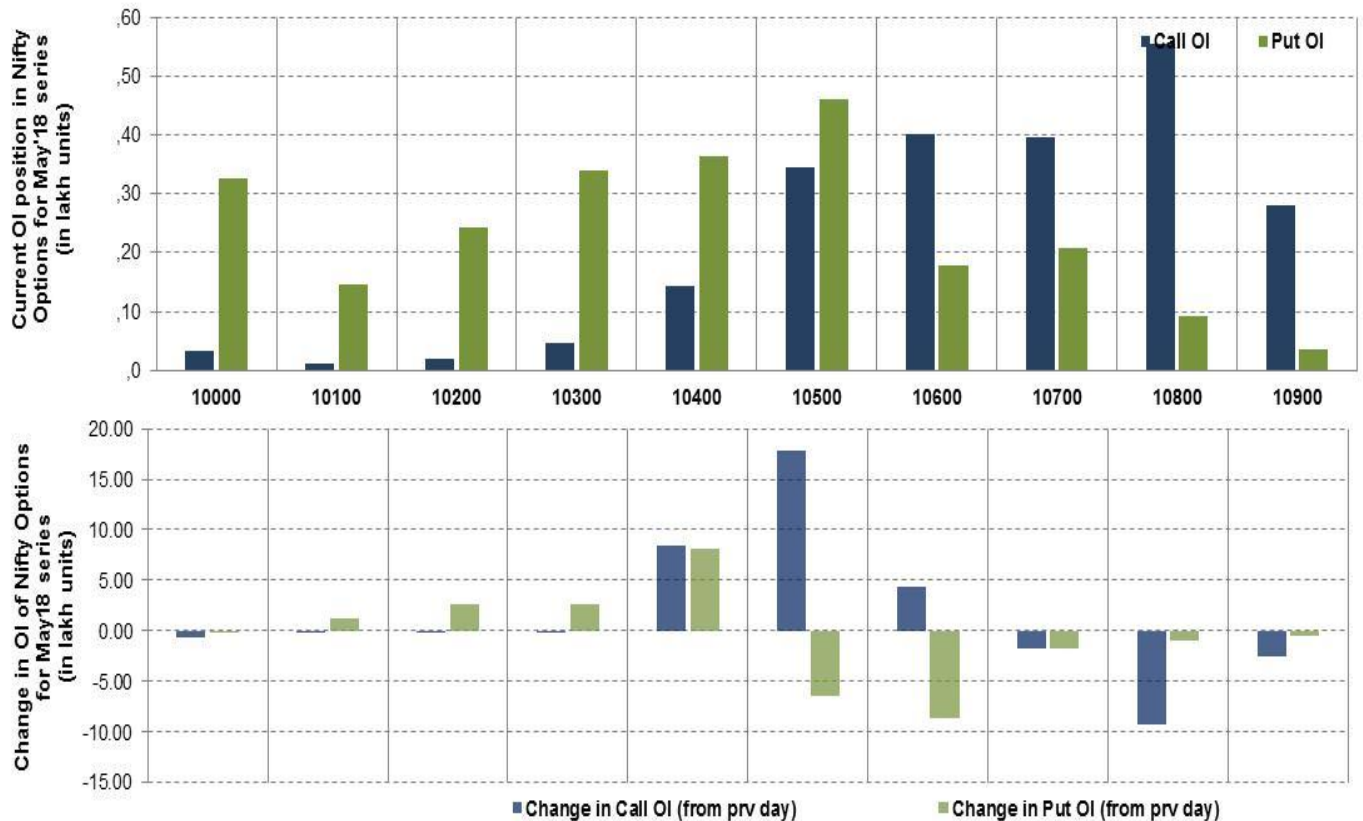
Nifty Futures



Bank Nifty Futures



Nifty Options



Note – Change in OI of Nifty Options refers to change from previous trading day
 Source-NSE, SIHL Derivatives Research (Institutional Equities)

- Among Nifty calls 10,800 SP from the May month expiry was the most active call with an addition of 0.93 million in open interest.
- Among Nifty puts, 10,500 SP from the May month expiry was the most active put with a reduction of 0.65 million open interests.
- The maximum OI outstanding for Calls was at 10,800 SP (5.54mn) and that for Puts was at 10,500 SP (4.59mn)

Nifty Technical & Indices Levels

1-Nifty 50 - 23/05/18
 Avg Avg



Nifty Cash prices have settled at 10430.35 down by 1.01 from the previous close. On the upper side it has resistance of 10500 and 10550 levels, while lower side it has support of 10400 and 10350 levels. Intraday traders should be cautious and take position accordingly.

Fresh Longs ↑ Open Interest ↑ Price					
Script	Prev. OI	Cur. OI	% Chg. OI	LTP	Price % Chg
IGL	8,662,500	10,320,750	19.14	263.95	1.34
CONCOR	1,768,750	1,884,375	6.54	1390.45	0.29
KPIT	7,672,500	8,131,500	5.98	258.95	4.12
POWERGRID	26,332,000	27,796,000	5.56	211.70	0.26
Short-Covering ↓ Open Interest ↑ Price					
Script	Prev. OI	Cur. OI	% Chg. OI	LTP	Price % Chg
NHPC	26,892,000	24,678,000	-8.23	27.00	1.69
STAR	2,903,400	2,659,800	-8.39	403.10	2.75
BATAINDIA	2,884,200	2,610,300	-9.50	761.55	1.15
ASHOKLEY	70,588,000	62,328,000	-11.70	145.40	2.68
Fresh Shorts ↑ Open Interest ↓ Price					
Script	Prev. OI	Cur. OI	% Chg. OI	LTP	Price % Chg
BPCL	10,427,400	11,529,000	10.56	373.70	-6.00
CENTURYTEX	5,853,100	6,290,900	7.48	938.50	-6.35
TATASTEEL	21,402,490	22,830,600	6.67	541.45	-6.53
BALKRISIND	945,600	997,600	5.50	1109.15	-2.15
Long Unwinding ↓ Open Interest ↓ Price					
Script	Prev. OI	Cur. OI	% Chg. OI	LTP	Price % Chg
VEDL	43,099,000	40,302,500	-6.49	252.70	-6.63
HINDPETRO	29,554,880	27,508,950	-6.92	287.40	-8.25
HAVELLS	5,091,000	4,649,000	-8.68	544.15	-0.95
BEML	2,220,600	2,007,000	-9.62	928.60	-1.83

Disclaimer:

The Information provided by SMS or in newsletter or in any document has been prepared by Shah Investor's Home Ltd (SIHL). The Information provided by SMS or in newsletter does not constitute an offer or solicitation for the purchase or sale of any financial instrument or as an official confirmation of any transaction. The information contained herein is from publicly available data or other sources believed to be reliable, but we do not represent that it is accurate or complete and it should not be relied on as such. SIHL or any of its affiliates/ group companies shall not be in any way responsible for any loss or damage that may arise to any person from any inadvertent error in the information contained in this report or SMS. This Information provided by SMS, reports or in newsletter is provided for assistance only and is not intended to be and must not alone be taken as the basis for an investment decision. The user assumes the entire risk of any use made of this information. Each recipient of this Information provided by SMS, report or in newsletter should make such investigation as it deems necessary to arrive at an independent evaluation of an investment in the securities of companies referred to in this information provided by SMS, report or in newsletter (including the merits and risks involved), and should consult his own advisors to determine the merits and risks of such investment. The investment discussed or views expressed may not be suitable for all investors. This information is strictly confidential and is being furnished to you solely for your information.

The information should not be reproduced or redistributed or passed on directly or indirectly in any form to any other person or published, copied, in whole or in part, for any purpose. The information provided by report or SMS is not directed or intended for distribution to, or use by, any person or entity who is a citizen or resident of or located in any locality, state, country or other jurisdiction, where such distribution, publication, availability or use would be contrary to law, regulation or which would subject SIHL and affiliates/ group companies to any registration or licensing requirements within such jurisdiction. The distribution of this Information provided by SMS or in newsletter in certain jurisdictions may be restricted by law, and persons in whose possession this Information provided by SMS or in newsletter comes, should inform themselves about and observe, any such restrictions. The information given or Information provided by SMS, report or in newsletter is as of the date of the issue date of report or the date on which SMS provided and there can be no assurance that future results or events will be consistent with this information. This information is subject to change without any prior notice. SIHL reserves the right to make modifications and alterations to this statement as may be required from time to time. However, SIHL is under no obligation to update or keep the information current.

Nevertheless, SIHL is committed to providing independent and transparent recommendation to its client and would be happy to provide any information in response to specific client queries. Neither SIHL nor any of its affiliates, group companies, directors, employees, agents or representatives shall be liable for any damages whether direct, indirect, special or consequential including lost revenue or lost profits that may arise from or in connection with the use of the information. Past performance is not necessarily a guide to future performance. The disclosures of interest statements incorporated in the Information provided by SMS, report or in newsletter are provided solely to enhance the transparency and should not be treated as endorsement of the views expressed in the report. The analyst for this report certifies that all of the views expressed in this report accurately reflect his or her personal views about the subject company or companies and its or their securities, and no part of his or her compensation was, is or will be, directly or indirectly related to specific recommendations or views expressed in this report.

About Us:

Shah Investor's Home Ltd (SIHL) is an ISO 9001:2008 Certified financial Services Company established in 1994 at Ahmadabad, Gujarat. Customer satisfaction is guaranteed through our diversified product portfolio, professional management and customer first attitude. SIHL was the first broking house in Gujarat with membership in National Securities Depository Ltd (NSDL) and was the first broking name providing services in NSE F&O in Ahmedabad. Today, SIHL ranks among the top most players in Gujarat in retail stock broking area with 45 branches, 350 franchisee across India and providing service to more than 1,25,000 clients.